

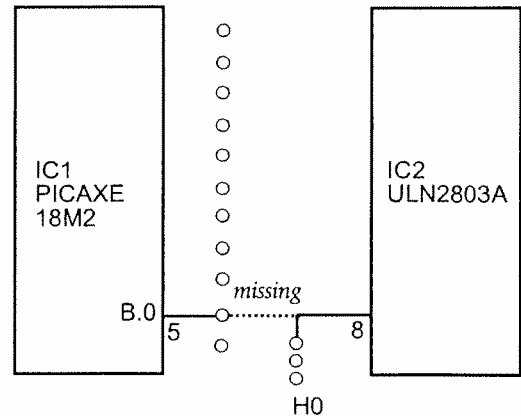
# CHI030A ADDENDUM

## CHI030A Output 0 track error

On boards marked 'CHI030A' (label is next to the 3.5mm cable download socket at the top of the board) there is a missing PCB track error that prevents output B.0 working correctly.

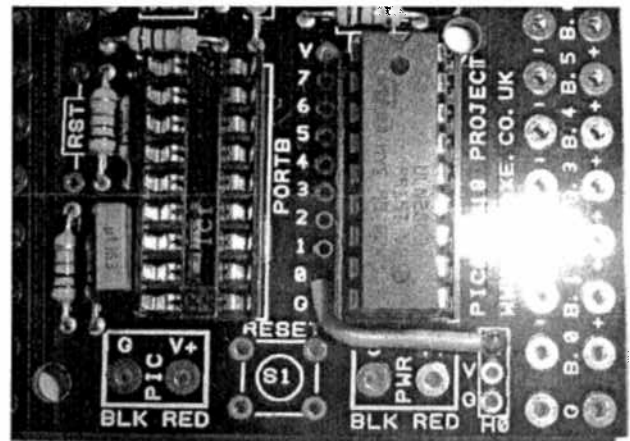
Output B.0 of the PICAXE chip is correctly connected to the header between the two chips. However it is not then connected to leg 8 of the darlington driver chip, which in turn stops output B.0 on the right hand side of the board from operating.

If you choose not to use output B.0 in your design then no action is required.

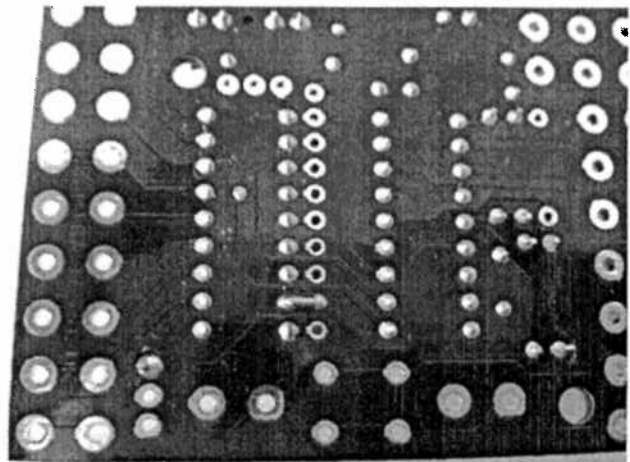


If you wish to use output B.0 then two different possible fixes are available. Either fix does the same job.

1) Solder a wire to connect the '0' pad between the two chips to the top '0' connection of header H0. This provides the missing connection.



2) Solder a small wire link from the '0' pad between the two chips to leg 8 of the darlington driver chip (on the solder side of the board).



We sincerely apologise for any inconvenience caused by this production error. This error will be fixed on the next production of the board, which will be marked 'CHI030B' next to the download socket.