

# Features

# Switching Regulator

- Efficiency up to 91%, no need for heatsinks!
- Pin-out compatible with LM78XX linear regs.
- Low profile (L\*W\*H=11.6\*8.5\*10.4mm)
- Wide input range (7V - 28V)
- Short circuit protection
- IEC/EN60950-1, Am2 certified



## R-78E-1.0

**1.0 AMP  
SIP3  
Single  
Output**



### Description

The R-78E series is a switching regulator module that has been designed to offer all the advantages of a switching regulator (high efficiency, wide input range, accurate output voltage regulation) but with a low cost for production quantities. Due to the R-78E's high efficiency of up to 91% at an output voltage of 5V/1A at the output, no heat sink is required. The compact TO-220 compatible SIP3 package measures only 11.6 x 8.5 x 10.4 mm, so it saves precious board space. The warranty is 3 years.

### Selection Guide

Part Number	Input Voltage Range [VDC]	Output Voltage [VDC]	Output Current [mA]	Efficiency typ @ min Vin. [%]	Max. Capacitive Load [µF]
R-78E3.3-1.0	7 - 28	3.3	1000	87	220
R-78E5.0-1.0	8 - 28	5.0	1000	91	220



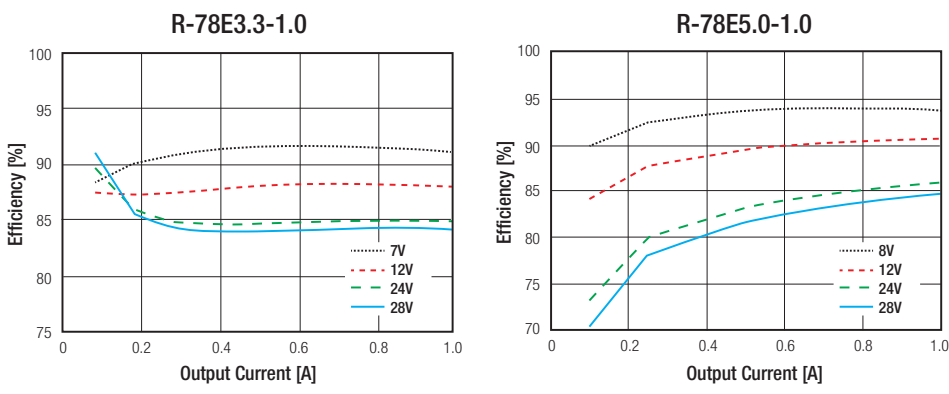
### Specifications (measured at ta= 25°C, full load, nominal input voltage and after warm-up)

BASIC CHARACTERISTICS					
Parameter	Condition	Min.	Typ.	Max.	
Input Voltage Range	3.3V	7VDC	24VDC	28VDC	
	5.0V	8VDC			
Input Current	min. Vin	1.5mA		1000mA	
No Load Input Current	typ. Vin		1.5mA		
Operating Frequency	Vin= 12VDC		330kHz		
Output Ripple and Noise	typ. Vin, full load and 20MHz BW limited				120mVp-p



IEC60950-1 certified  
EN60950-1 certified

### Efficiency vs. Load



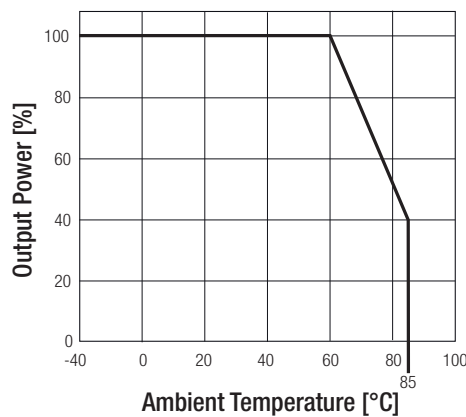
**Specifications** (measured at  $t_a = 25^\circ\text{C}$ , full load, nominal input voltage and after warm-up)

REGULATIONS		
Parameter	Condition	Value
Output Voltage Accuracy		$\pm 3\%$ typ. / $\pm 5\%$ max.
Line Voltage Regulation	low line to high line, full load	$\pm 1\%$ max.
Load Voltage Regulation	typ $V_{in}$ . and 10% to 100% load	$\pm 1.5\%$ max.

PROTECTIONS		
Parameter	Condition	Value
Short Circuit Protection (SCP)		automatic recovery
Over Current Protection (OCP)	100% = 1A	200% Load

ENVIRONMENTAL		
Parameter	Condition	Value
Operating Temperature Range	natural convection and with derating (see graph)	$-40^\circ\text{C}$ to $+85^\circ\text{C}$
Humidity	non-condensing	95%, RH max.
MTBF	MIL-HDBK 217F, $+25^\circ\text{C}$	$3875 \times 10^3$ hours

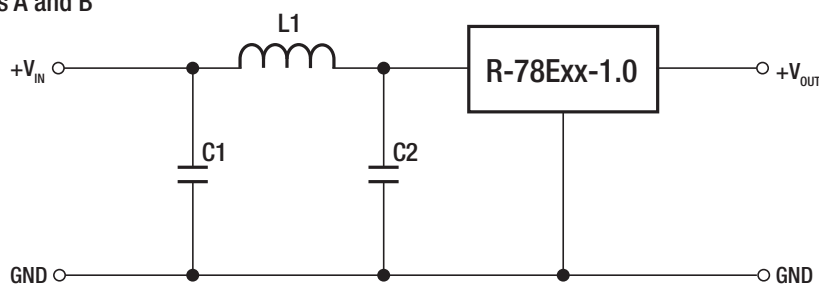
**Derating Graph**



SAFETY AND CERTIFICATIONS		
Certificate Type (Safety)	Report / File Number	Standard
Information Technology Equipment, General Requirements for Safety (LVD)	LVD1603123	IEC/EN60950-1, 2nd Edition, Am2:2013

EMC Compliance	Condition	Standard / Criterion
Information technology equipment - Radio disturbance characteristics - Limits and methods of measurement	with external filter	EN55022, Class A or B

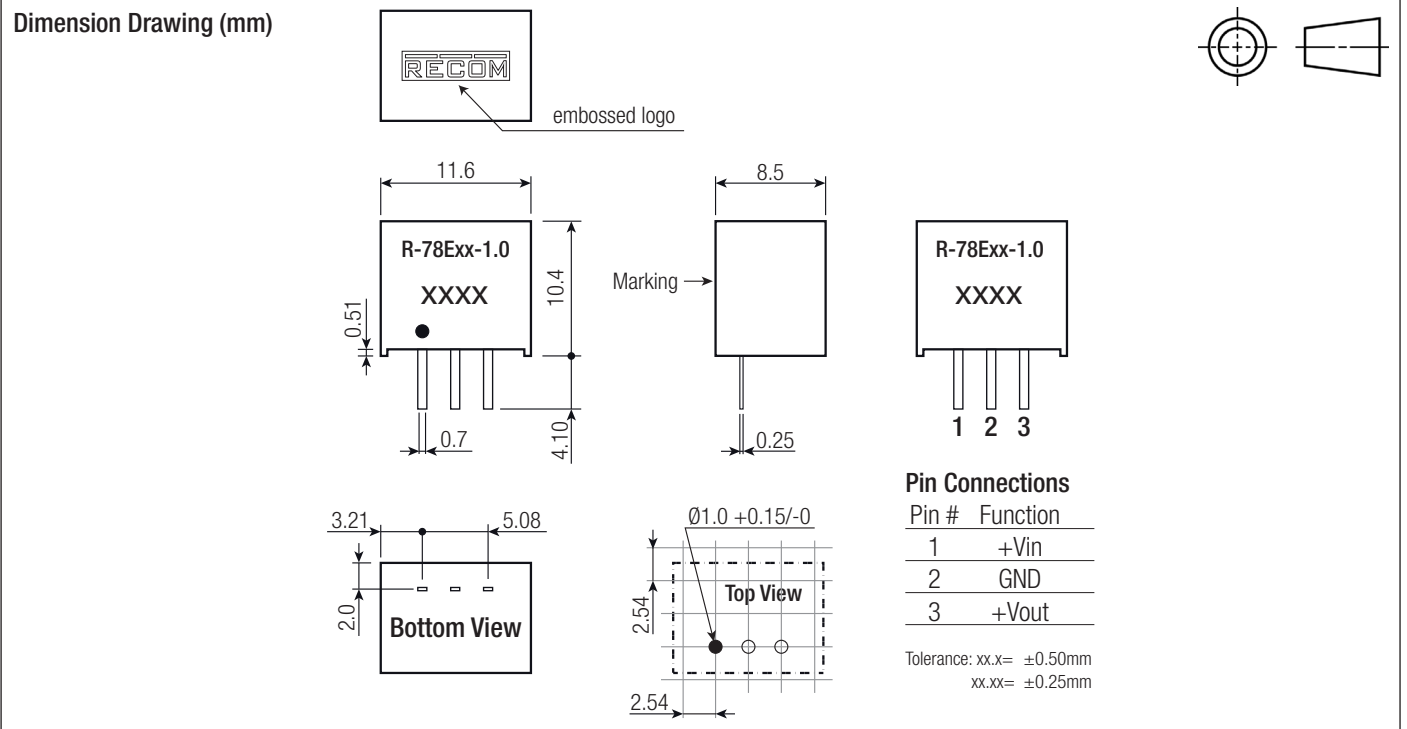
**EMI Filter suggestion Class A and B**



MODEL	C1/C2	L1
Class A	1210 10 $\mu\text{F}$ , 50V MLCC	10 $\mu\text{H}$
Class B		33 $\mu\text{H}$

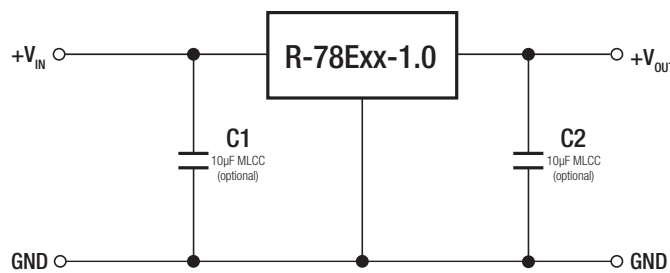
**Specifications** (measured at  $t_a = 25^\circ\text{C}$ , full load, nominal input voltage and after warm-up)

DIMENSION and PHYSICAL CHARACTERISTICS	
Parameter	Value
Case Material	UL94V-0, non-conductive black plastic
Potting Material	UL94V-0, Silicone
Package Dimension (LxWxH)	11.6 x 8.5 x 10.4mm
Package Weight	2g typ.



### INSTALLATION AND APPLICATION

**Standard Application:**



To protect the converter during power-up, use soft start power supply.

**Notes:**

Note1: The R-78Exx-1.0 can't be used as positive to negativ converter.

### PACKAGING INFORMATION

Parameter	Type	Value
Packaging Dimension (LxWxH)	Tube	520 x 18.2 x 11.2mm
Packaging Quantity		42pcs.
Storage Temperature Range		-55°C to +125°C

The product information and specifications may be subject to changes even without prior written notice. The product has been designed for various applications; its suitability lies in the responsibility of each customer. The products are not authorized for use in safety-critical applications without RECOM's explicit written consent. A safety-critical application is an application where a failure may reasonably be expected to endanger or cause loss of life, inflict bodily harm or damage property. The applicant shall indemnify and hold harmless RECOM, its affiliated companies and its representatives against any damage claims in connection with the unauthorized use of RECOM products in such safety-critical applications.