

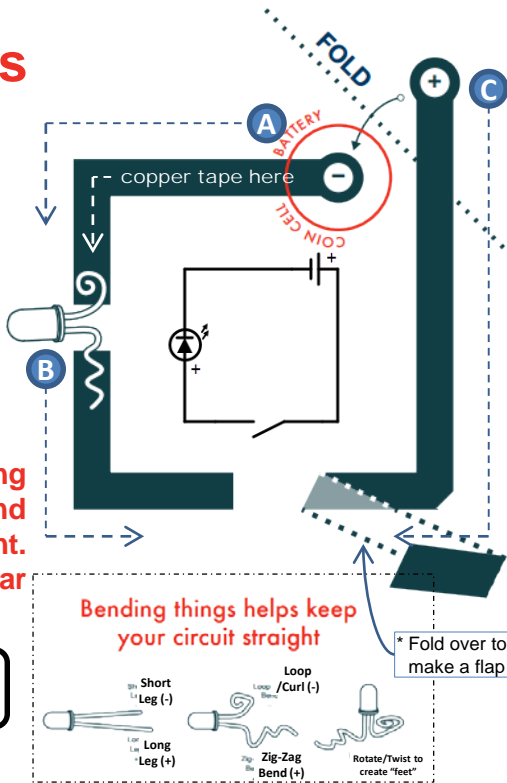
# Paper Circuits

Resource: <http://sfe.io/r65>

- 1 Lay copper tape down along the dark lines. (A, B, C\*)
- 2 Fold the copper tape through the corners – do not break the tape until you reach the end of each section.
- 3 Bend your LED like the drawing – making sure the positive and negative legs look different. And, secure it down with clear tape.

Want to learn more?  
Check out: [sparkfuneducation.com](http://sparkfuneducation.com)

Credits: Materials designed by and adapted from the High-Low Tech Lab, Jie Qi, and MIT Media Lab.



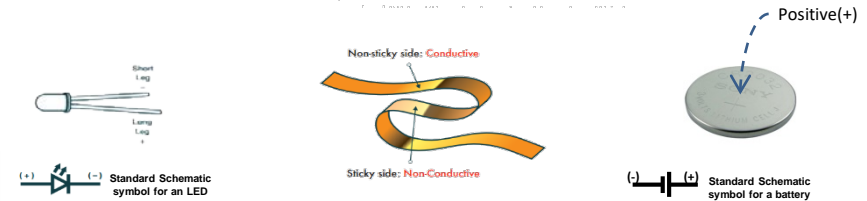
# What is a Circuit?

Tutorial: <http://sfe.io/t26>

A circuit is a **continuous** path that allows electricity to flow from a source of high potential energy (+) to an area of low potential energy (-).

The word “circuit” comes from the same word as **circle**. You’ll notice that it starts and ends at the same place. A circuit provides a path for electricity to flow from one side of a battery to the other through a device called a “load” that converts electrical energy to something useful like light.

Flip over this card and make your own circuit using a small coin cell battery, conductive copper tape, and an LED!



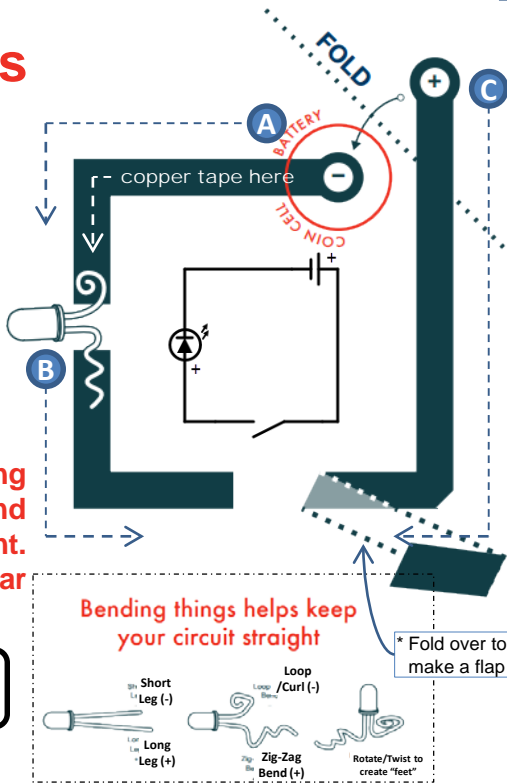
# Paper Circuits

Resource: <http://sfe.io/r65>

- 1 Lay copper tape down along the dark lines. (A, B, C\*)
- 2 Fold the copper tape through the corners – do not break the tape until you reach the end of each section.
- 3 Bend your LED like the drawing – making sure the positive and negative legs look different. And, secure it down with clear tape.

Want to learn more?  
Check out: [sparkfuneducation.com](http://sparkfuneducation.com)

Credits: Materials designed by and adapted from the High-Low Tech Lab, Jie Qi, and MIT Media Lab.



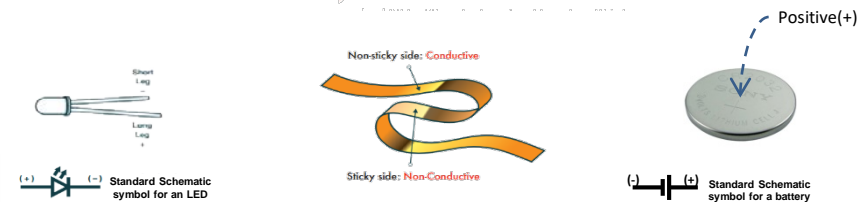
# What is a Circuit?

Tutorial: <http://sfe.io/t26>

A circuit is a **continuous** path that allows electricity to flow from a source of high potential energy (+) to an area of low potential energy (-).

The word “circuit” comes from the same word as **circle**. You’ll notice that it starts and ends at the same place. A circuit provides a path for electricity to flow from one side of a battery to the other through a device called a “load” that converts electrical energy to something useful like light.

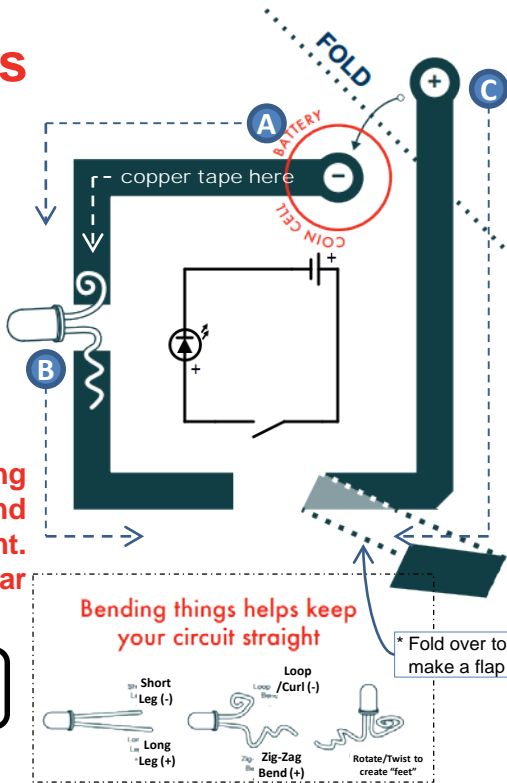
Flip over this card and make your own circuit using a small coin cell battery, conductive copper tape, and an LED!



- 1 Lay copper tape down along the dark lines. (A, B, C\*)
- 2 Fold the copper tape through the corners – do not break the tape until you reach the end of each section.
- 3 Bend your LED like the drawing – making sure the positive and negative legs look different. And, secure it down with clear tape.

Want to learn more?  
Check out: [sparkfuneducation.com](http://sparkfuneducation.com)

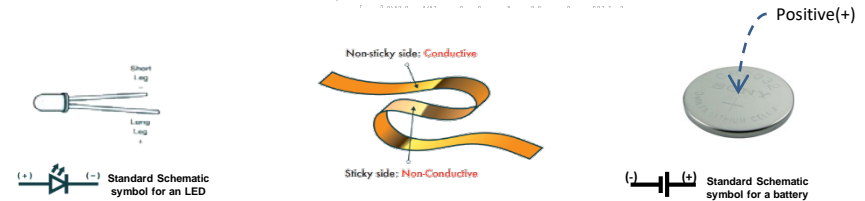
Credits: Materials designed by and adapted from the High-Low Tech Lab, Jie Qi, and MIT Media Lab.



A circuit is a **continuous** path that allows electricity to flow from a source of high potential energy (+) to an area of low potential energy (-).

The word “circuit” comes from the same word as **circle**. You’ll notice that it starts and ends at the same place. A circuit provides a path for electricity to flow from one side of a battery to the other through a device called a “load” that converts electrical energy to something useful like light.

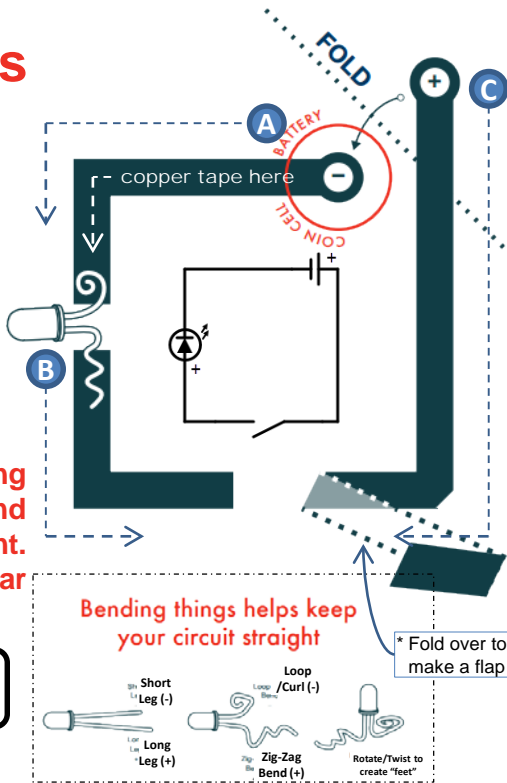
Flip over this card and make your own circuit using a small coin cell battery, conductive copper tape, and an LED!



- 1 Lay copper tape down along the dark lines. (A, B, C\*)
- 2 Fold the copper tape through the corners – do not break the tape until you reach the end of each section.
- 3 Bend your LED like the drawing – making sure the positive and negative legs look different. And, secure it down with clear tape.

Want to learn more?  
Check out: [sparkfuneducation.com](http://sparkfuneducation.com)

Credits: Materials designed by and adapted from the High-Low Tech Lab, Jie Qi, and MIT Media Lab.



A circuit is a **continuous** path that allows electricity to flow from a source of high potential energy (+) to an area of low potential energy (-).

The word “circuit” comes from the same word as **circle**. You’ll notice that it starts and ends at the same place. A circuit provides a path for electricity to flow from one side of a battery to the other through a device called a “load” that converts electrical energy to something useful like light.

Flip over this card and make your own circuit using a small coin cell battery, conductive copper tape, and an LED!

