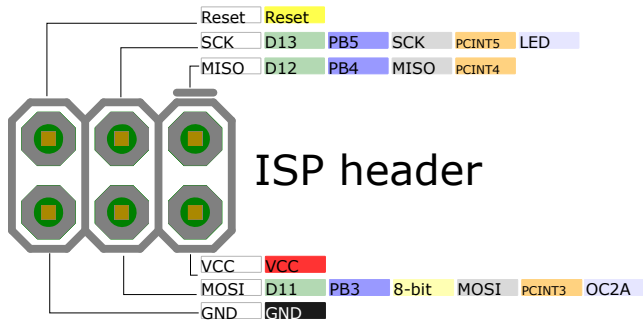


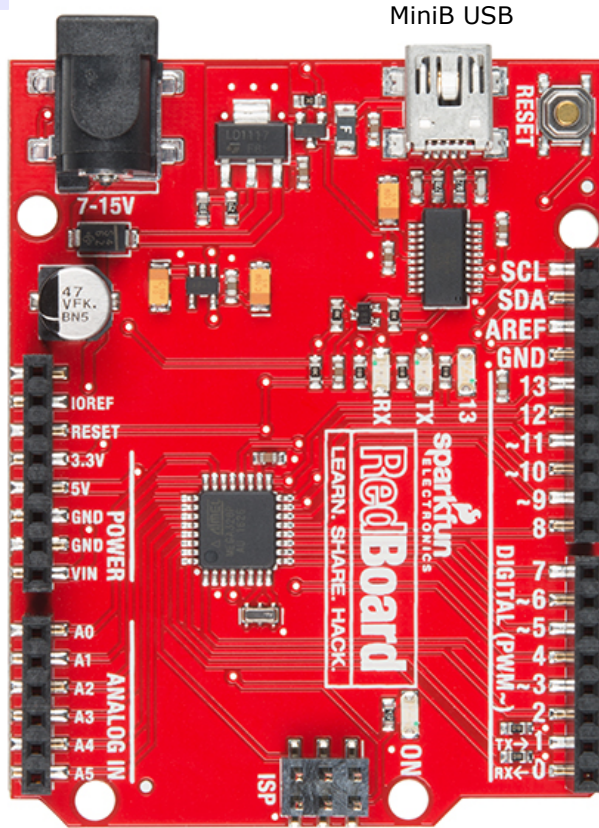
RedBoard (DEV-13975)

Programmed with Arduino (Uno)

16MHz



Name	ADC
Power	PWM
GND	Serial
Control	Ext Interrupt
Arduino	PC Interrupt
Port	Misc



MiniB USB

Reset Button

ISP header

NC	
IOREF	IOREF
PCINT14 PC6	Reset RST
	3.3V 3.3V
	5V 5V
	GND GND
	GND GND
	Vin Vin

PCINT8	ADC0	PC0	A0/D14	A0	
PCINT9	ADC1	PC1	A1/D15	A1	
PCINT10	ADC2	PC2	A2/D16	A2	
PCINT11	ADC3	PC3	A3/D17	A3	
PCINT12	SDA	ADC4	PC4	A4/D18	A4
PCINT13	SCL	ADC5	PC5	A5/D19	A5

SCL	A5/D19	PC5	ADC5	SCL	PCINT13	
SDA	A4/D18	PC4	ADC4	SDA	PCINT12	
AREF	AREF					
GND	GND					
13	D13	PB5	SCK	PCINT5	LED	
12	D12	PB4	MISO	PCINT4		
11	D11	PB3	8-bit	MOSI	PCINT3	OC2A
10	D10	PB2	8-bit	SS	PCINT2	OC1B
9	D9	PB1	8-bit	PCINT1	OC1A	
8	D8	PB0	PCINT0	ICP1	CLKO	
7	D7	PD7	PCINT23	IN1		
6	D6	PD6	8-bit	PCINT22	OC0A	AIN0
5	D5	PD5	8-bit	PCINT21	OC0B	T1
4	D4	PD4	PCINT20	T0	XCK	
3	D3	PD3	8-bit	INT1	PCINT19	OC2B
2	D2	PD2	INT0	PCINT18		
TX0->1	D1	PD1	TXD	PCINT17		
RX<-0	D0	PD0	RXD	PCINT16		

Power

VIN: 7V-15V

VCC: 5V

Maximum current: 800mA on 5V line

150mA on 3.3V line

ATmega328

Absolute maximum VCC: 6V
 Maximum current for chip: 200mA
 Maximum current per pin: 40mA
 Recommended current per pin: 20mA
 8-bit Atmel AVR
 Flash Program Memory: 32kB
 EEPROM: 1kB
 Internal SRAM 2kB
 ADC: 10-bit
 PWM: 8bit

LEDs

Power: Green

User (D13): Blue

RX: Yellow

TX: Red

