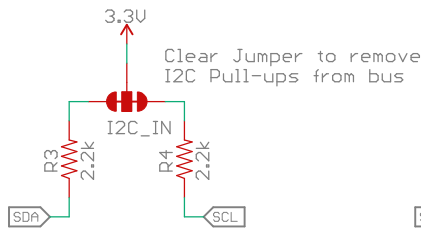
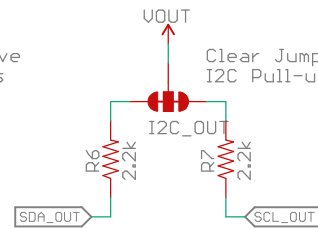


At power on, the PCA9536 pins are inputs with weak (<100K) pullup.

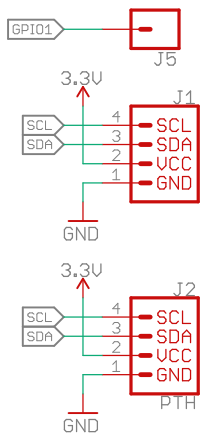
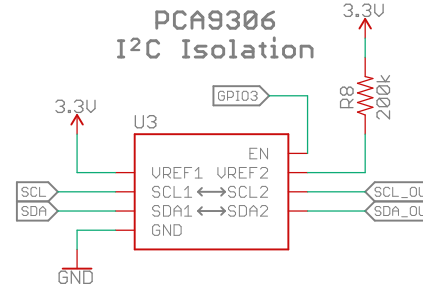
7-bit Unshifted I2C Address: 0x41



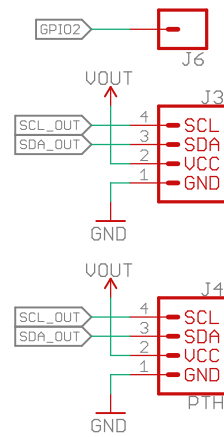
Clear Jumper to remove I2C Pull-ups from bus



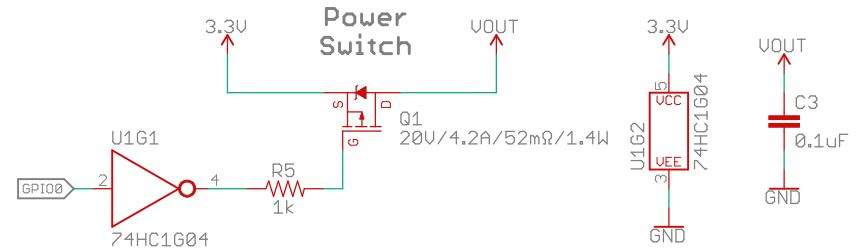
Clear Jumper to remove I2C Pull-ups from bus



IN



OUT



Released under the Creative Commons Attribution Share-Alike 4.0 License  
<https://creativecommons.org/licenses/by-sa/4.0/>



TITLE: Qwiic Power Switch

Design by: Paul Clark  
 Based on the Qwiic RGB by N. Seidle

REV: X02

Date: 01/11/2021 10:35

Sheet: 1/1