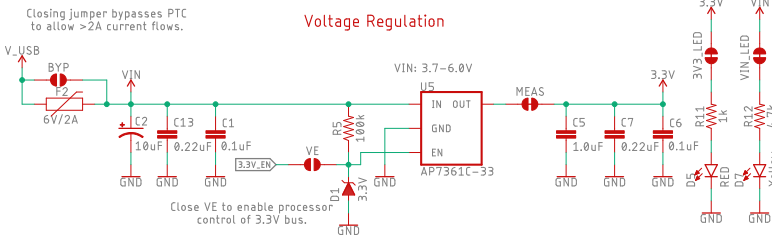


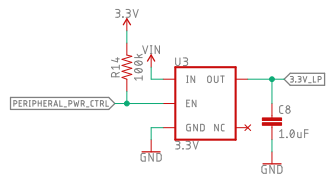
Closing jumper bypasses PTC to allow >2A current flows.



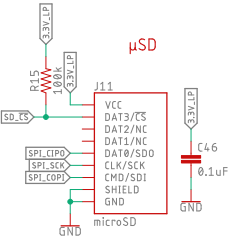
Voltage Regulation

Close VE to enable processor control of 3.3V bus.

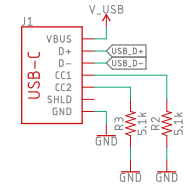
Peripheral Power Control



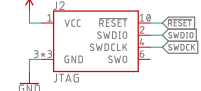
µSD



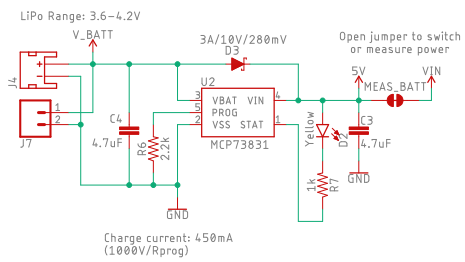
USB



SWO

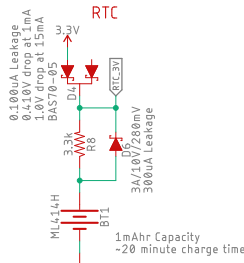


LiPo Charger



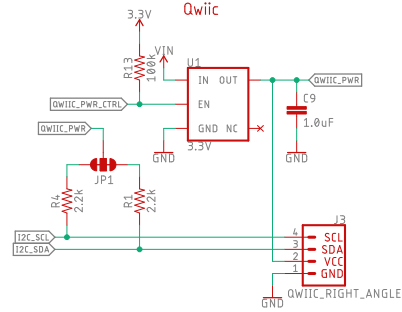
Charge current: 450mA (1000V/Rprog)

RTC

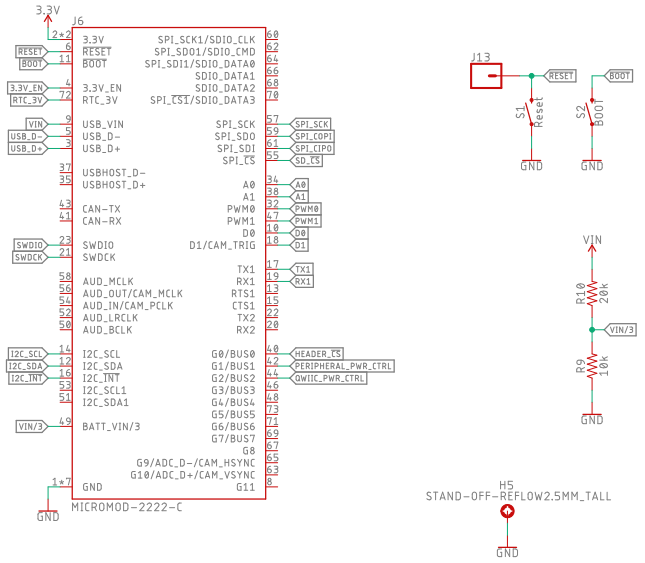


0.100µA Leakage
0.410V drop at 1mA
1.0V drop at 15mA
BAS 70-100
3A/10V/280mV
3000µA Leakage
1mAh Capacity
~20 minute charge time

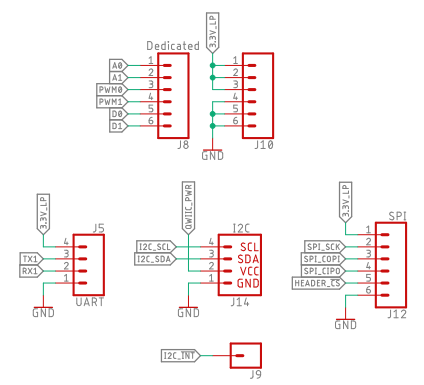
Qwiic



MicroMod Connector



Peripheral and Pin Connections



Released under the Creative Commons Attribution Share-Alike 4.0 License
<https://creativecommons.org/licenses/by-sa/4.0/>

TITLE: MicroMod-Datalogging-CarrierBoard

Design by: N. Seidle

REV: v1.1

Date: 10/19/2020 1:04 PM

Sheet: 1/1