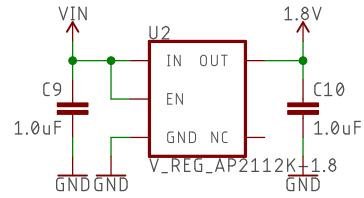
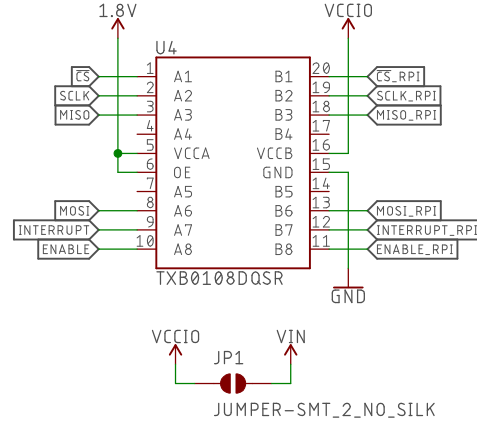


1.8V Regulator

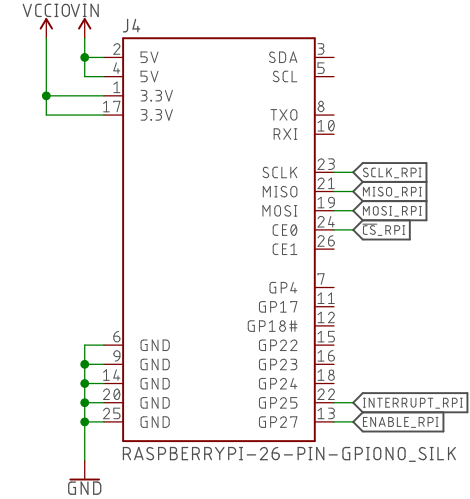


TXB0108 Level Shifter

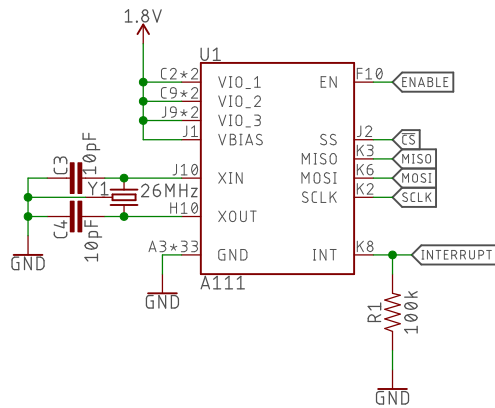


Short JP1 to connect VCCIO to VIN.
(These signals are isolated by default to allow a Pi to power the sensor via the 5V bus and maintain a 3.3V I/O interface.)

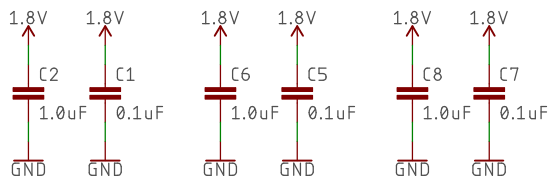
Raspberry Pi Connector



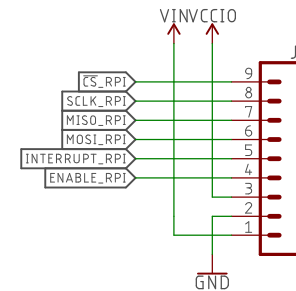
A111 Pulsed Radar Sensor



VIO1a,b -- C2, D1 VIO2a,b -- C9, D10 VIO3a,b -- J9, K9



Power & I/O Connector



Released under the Creative Commons Attribution Share-Alike 4.0 License
<https://creativecommons.org/licenses/by-sa/4.0/>

TITLE: A111_Pulsed_Radar_Breakout

Design by: Jim Lindblom



REV: x02

Date: 7/13/2018 11:56 AM

Sheet: 1/1