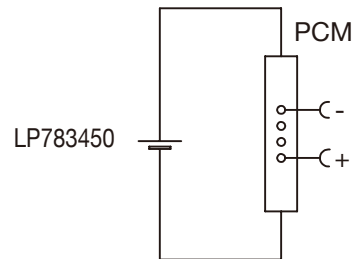


### Circuit diagram



## Specification

Lithium Polymer Battery Pack LP783450 1500mAh 3.7V with Protection Circuit Module (PCM)  
This data sheet describes the requirements and properties of lithium polymer rechargeable battery pack manufactured by LiPol Battery Co., Ltd - China

### Mechanical Characteristics

Cell	▶ LP783450
PCM	▶ Yes
NTC	▶ No
Configuration	▶ 1S1P
Weight	▶ appr. 30g
Connector	▶ JST PHR-2 A

### Electrical Specification

Rated Capacity	▶ 1500mAh min, 1510mAh typ.
Nominal Voltage	▶ 3.7V
Wat-Hour Rating	▶ 5.55Wh
Max. Operating Voltage Range	▶ 2.75V to 4.20V
Max. Charge Voltage	▶ 4.2V ±50mV
Max. Charge Current	▶ 750mA
Standard Charge Current	▶ 300mA
Max. Continuous Discharge Current	▶ 1500mA
Standard Discharge Current	▶ 750mA
Discharge Cut Off	▶ 2.75V
Internal Impedance	▶ <200mΩ
Expected Cycle Life @ (0.5C/0.5C) @ 23±5°C	▶ 500 cycles ≥ 80%

### Cell Protection

Overcharge Detection	▶ 4.275 ±50mV (0.7 to 1.3sec. delay, release 4.275V ±50mV)
Overdischarge Detection	▶ 2.75V ±50mV (14 to 26msec. delay, resume 2.50V ±50mV)
Overcurrent Detection	▶ 2A to 2.5A (8 to 16msec. delay)

### Ambient Conditions

Charge Temp. Range	▶ +10°C to +45°C
Discharge Temp. Range	▶ -20°C to +60°C
Storage Temp. Range	▶ 1 year at -20°C to +30°C >70%
	▶ 3 months at -20°C to +45°C >70%
	▶ 1 month at -20°C to +60°C >70%

### Environmental and Safety

Please follow LiPol Handling and Safety Precautions for Lithium Polymer Battery. This battery meets the requirements of Battery Directives, and the battery parts are IEC62133-2-2017 & RoHS-Compliant. For more safety precautions and performance standards, please go to [www.lipolbattery.com/support.html](http://www.lipolbattery.com/support.html)

Mae in mm	Freimatoleranzen	Date	Name	<h1>LiPol Battery</h1>	
All dimensions in mm	Generaltoleranzen	Erst. / Orig	31.03.2024		Xie Qingfang
Als Betriebsgeheimnis anvertraut, alle Rechte vorbehalten	up to 6	0,1	Gepr./Check	31.03.2024	Guo Daxia
	over 6 up to 30	0,2	Benennung/ Designation		
Proprietary data, company confidential, all rights reserved.	over 30 up to 100	0,3	LP783450		3
	over 100	0,5	Original:		
			Zchng. / Dwg. Nr.		Index
			FD_3450_50		
			support@lipolbattery.com		www.LiPolBattery.com