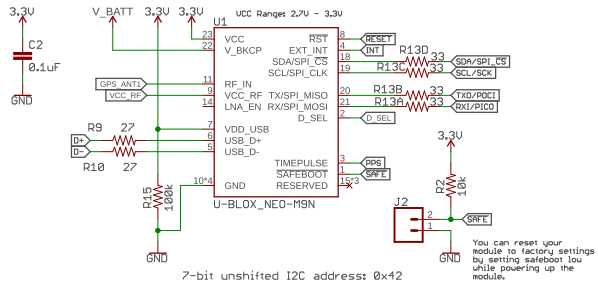
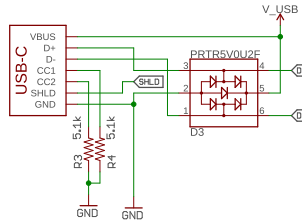


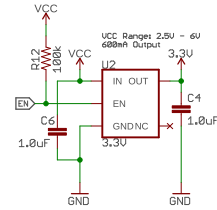
### GPS: u-blox NEO-M9N



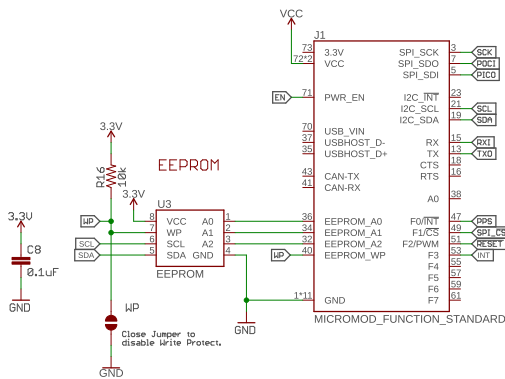
### u-Center USB



### Voltage Regulation: AP2112K



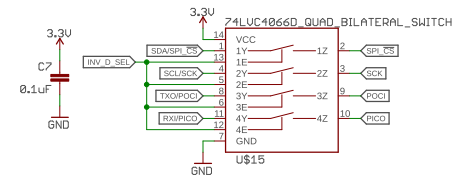
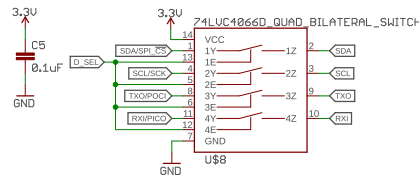
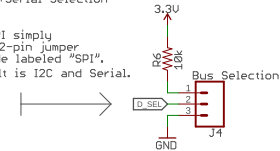
### Function Card Edge



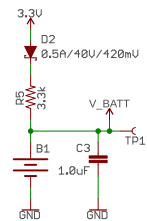
### Bus Selection: 74LUC4066D

SPI or I2C+Serial Selection

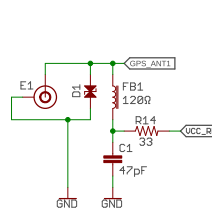
To use SPI simply move the 2-pin jumper to the side labeled "SPI". The default is I2C and Serial.



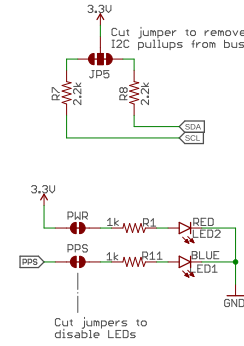
### Hot Start Battery



### u.FL Connector L1 Antenna



### LEDs and Jumpers



Released under the Creative Commons Attribution Share-Alike 4.0 License  
<https://creativecommons.org/licenses/by-sa/4.0/>

Special Instructions



TITLE: SparkFun\_GNSS\_NEO-M9N

Design by: Elias Santistevan

REV: v1.2

Date: 8/3/2022 3:05 PM

Sheet: 1/1