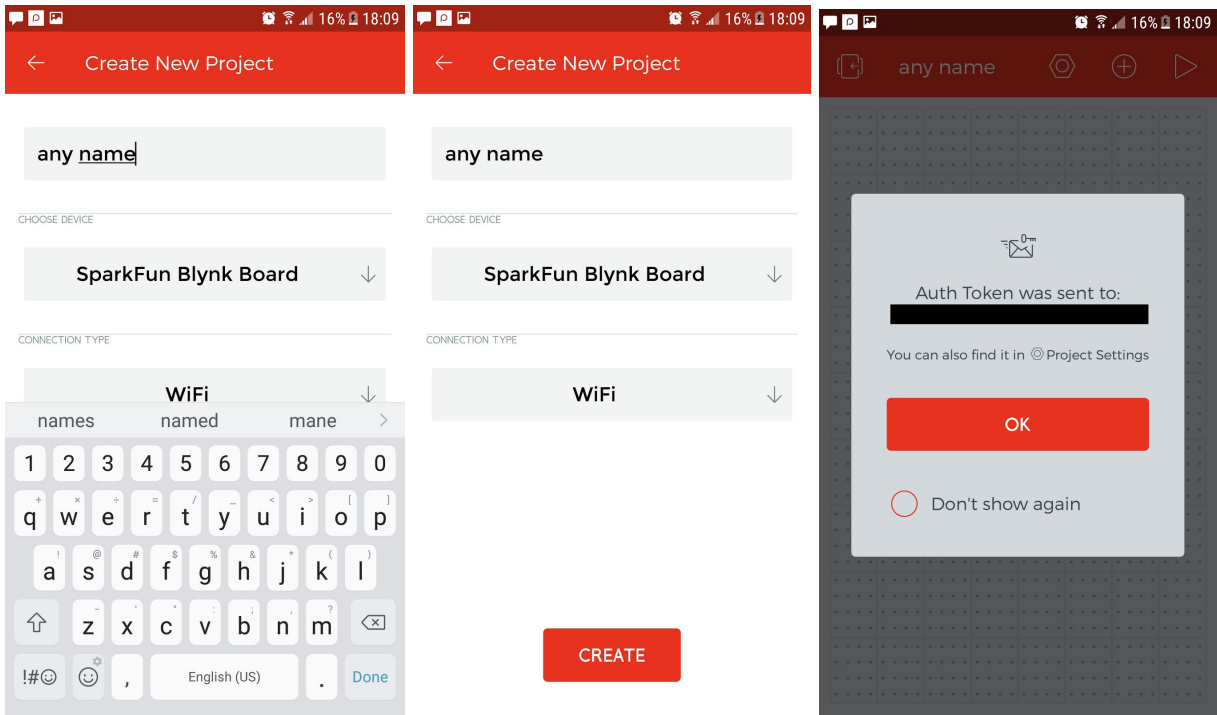
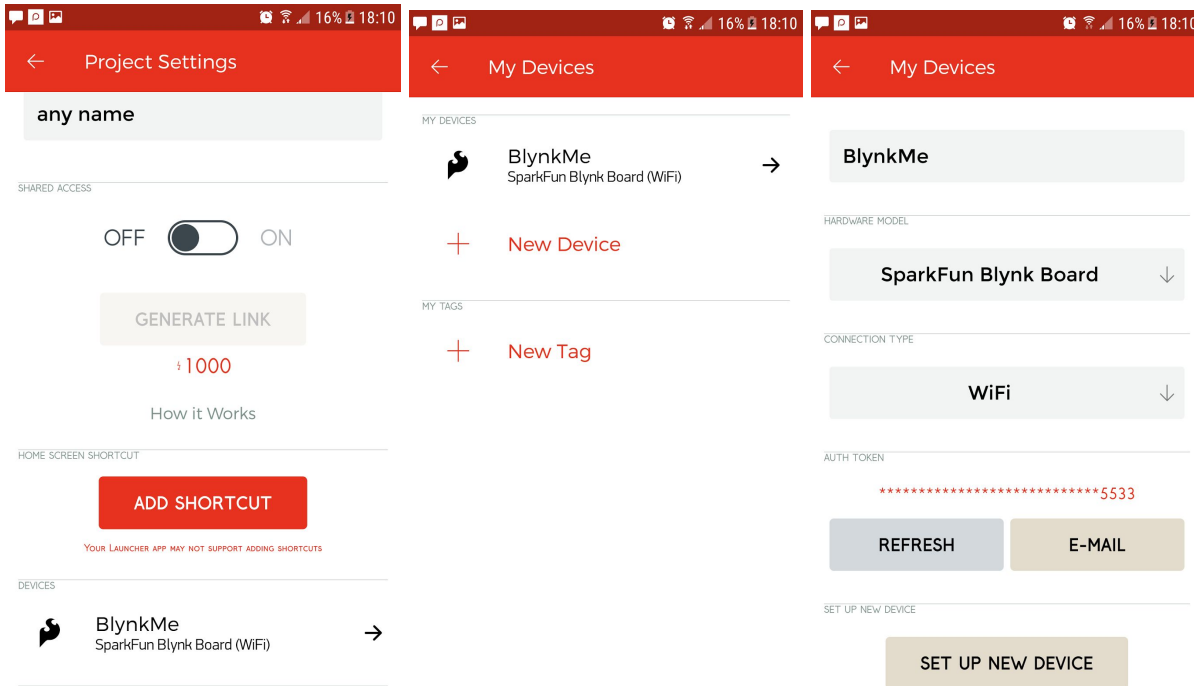


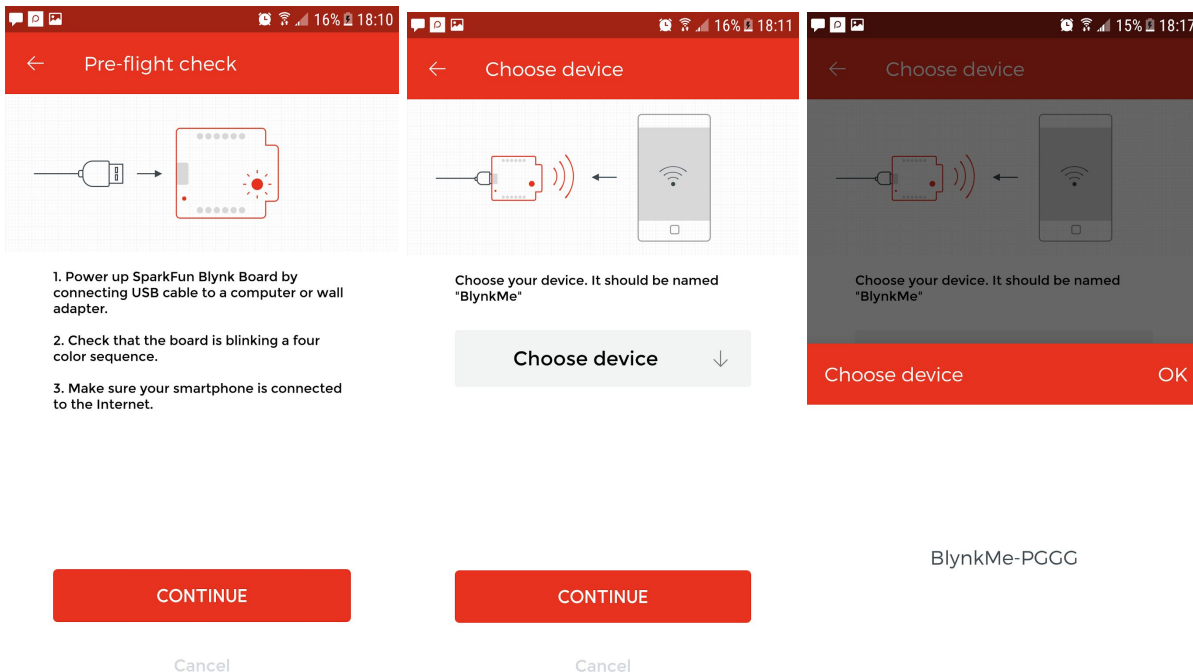
Create a “New Project” and scroll down and select “SparkFun Blynk Board”



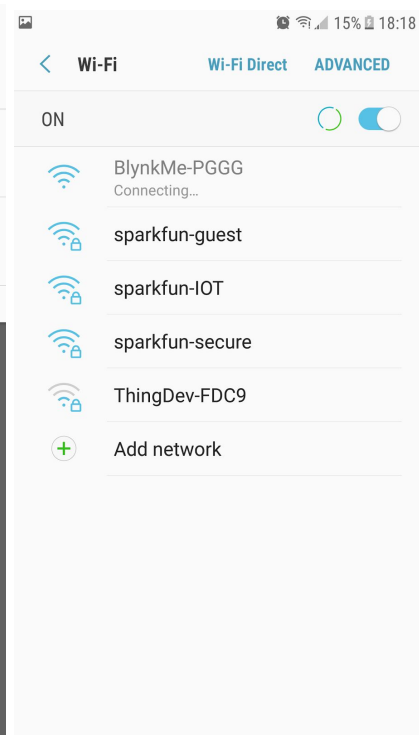
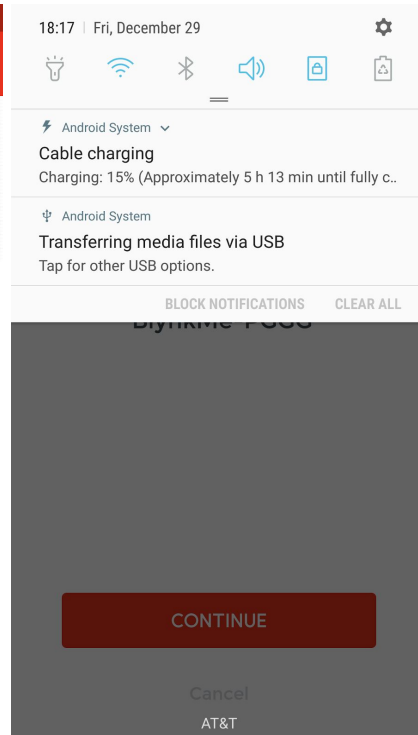
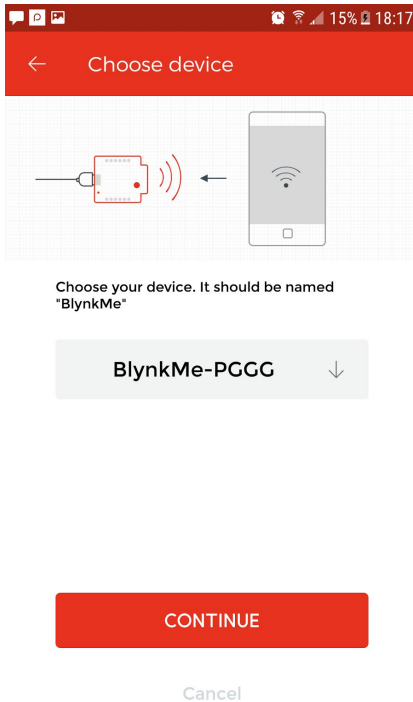
Label the project and click create... a token linking to the project



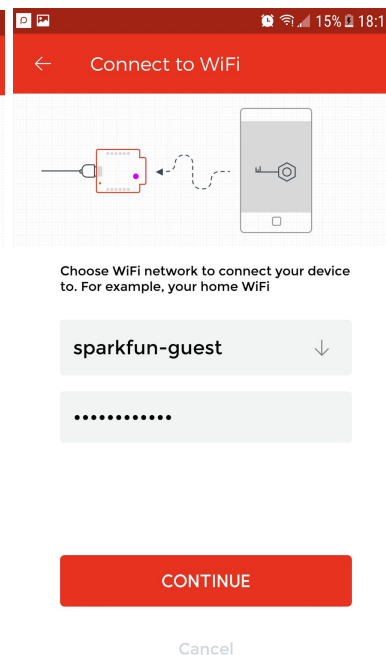
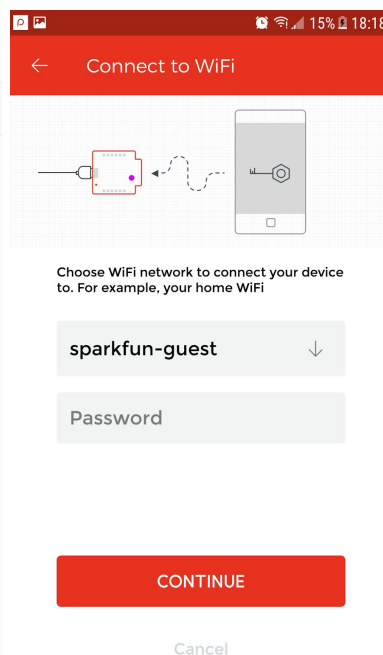
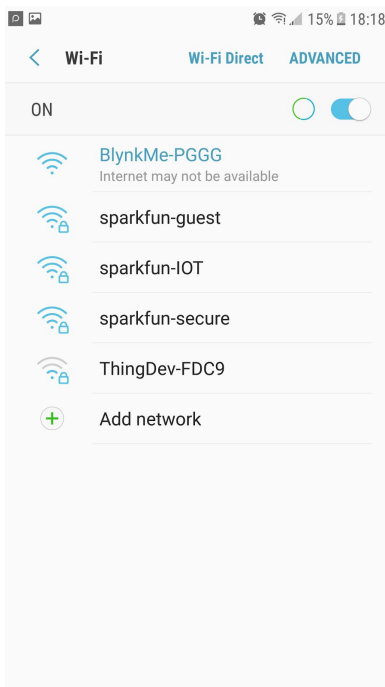
Next you'll want to start linking your board, click "BlynkMe" under devices -> my devices. You can click on email to email yourself the token for this project (you will need that for if you follow the "terminal" video hook up). Otherwise, proceed to the bottom for "setup new device"



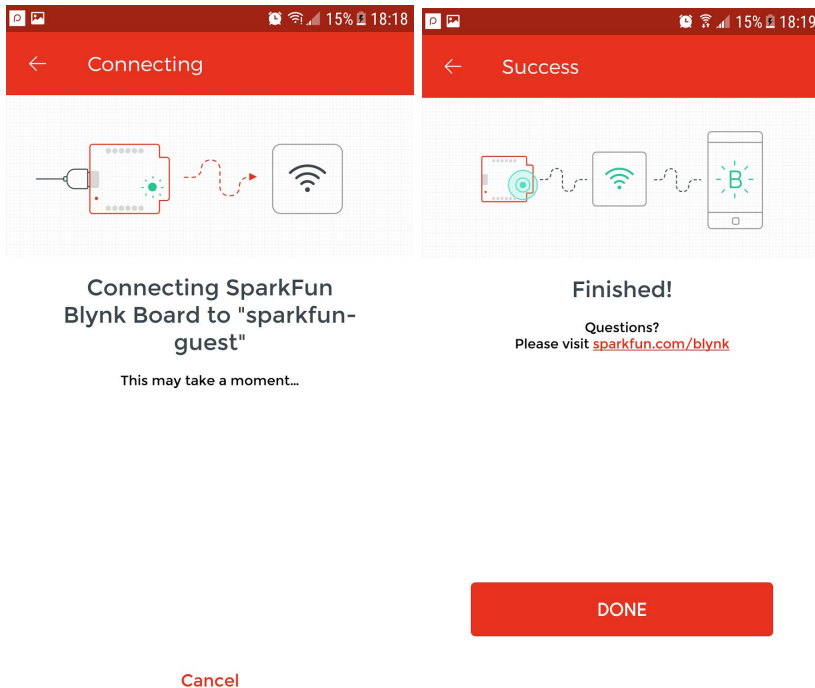
Follow the prompts and choose the Blynk board you have plugged in. You may need to reconfigure the board by holding down the "0" button for 4 second (it should blink white while you hold the button down). Once you do so it should generate a new color code.



Once you select your device, you'll want to connect to the Blynk board on your phone's wifi settings before clicking continue. If you get stuck in the later steps, you will need to reconfigure your Blynk board as mentioned above and repeat this and the following steps.



Once you connect to you board through your phone's wifi settings, you should be able to select you network and enter the required credentials.



If everything goes well, you should be able to connect to the internet and the Blynk server/cloud. Now your device is hooked up to your new project.