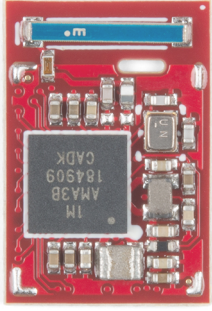


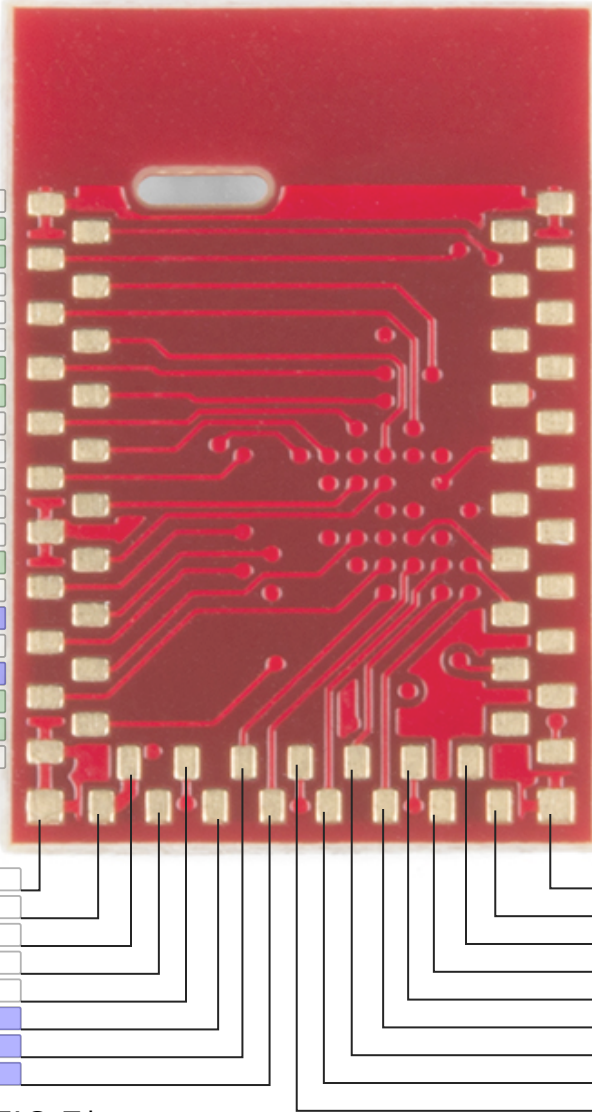
Artemis Module WRL-15376



Wireless

Pad.Name	Bus
Power	UART
GND	Misc
Control	Misc2
ADC - 14-bit	
PWM - 15-bit	

GND	GND
TX0	MOSI4 44
	PDMCLK 37
	MOSI3 38
	PDMDATA 36
	3
TX1	SCL3/SCK3 42
RX1	SDA3/MISO3 43
	CLKOUT 0
	Reset RST
	TX0 1
	RX0 2
GND	GND
PDMDATA	RX0 45
	TX0 41
	RX0 31
	RX0 17
	TX0 16
	18
	19
GND	GND
GND	GND
3.3V	VDD
3.3V	VDD
32kHz RTC	XI
32kHz RTC	XO
PDMDATA	RX0 29
PDMDATA	RX0 11
PDMDATA	RX0 34



GND	GND
20	SWDCK TX1
49	RX SDA5/MISO5 RX0
39	SCL4/SCK4 TX1
40	SDA4/MISO4 RX1
9	SDA1/MISO1 RX1
47	Boot MOSI5 RX1 32KHZ
10	MOSI1 TX1 PDMCLK
48	TX SCL5/SCK5 TX0
21	SWDIO RX1
8	SCL1/SCK1 TX1
5	SCL0/SCK0
7	MOSI0 TX0 CLKOUT
35	TX1
4	RX1
24	TX1 32KHZ
22	PDMCLK
23	
27	SCL2/SCK2 RX0
14	TX1 PDMCLK 32KHZ
28	MOSI2 TX0
GND	GND
6	SDA1/MISO0
32	
25	SDA2/MISO2 RX1
12	TX1 PDMCLK
26	TX0
13	
15	PDMDATA
33	32KHZ

Additional Functionality Not Shown: Secure Card, Flow Control, I2S, JTAG, Triggers

Power
 VDD:1.8-3.6V
 6uA/MHz (operates less than 5mW at full operation)
 Bluetooth:
 TX: 3mA
 RX:3mA
 4dBm TX (max)

Artemis Module
 1MB Flash, 384k SRAM
 48MHz/96MHz ARM Cortex-M4F
 2 UARTS, 6 SPI/I2C Ports, 1 I2S
 ADC: 14 bit 0-2V
 PWM: 15-bit
 PDM interface
 Secure 'Smart Card' interface
 All pins are interrupt on change

Programming
 Boot TX/RX needed for serial bootloading
 Boot pin only required for factory bootloader updates