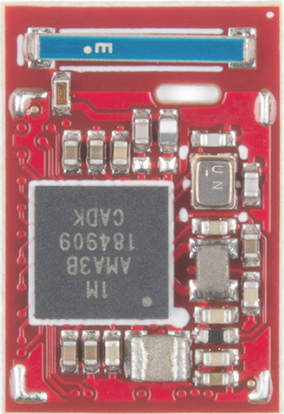
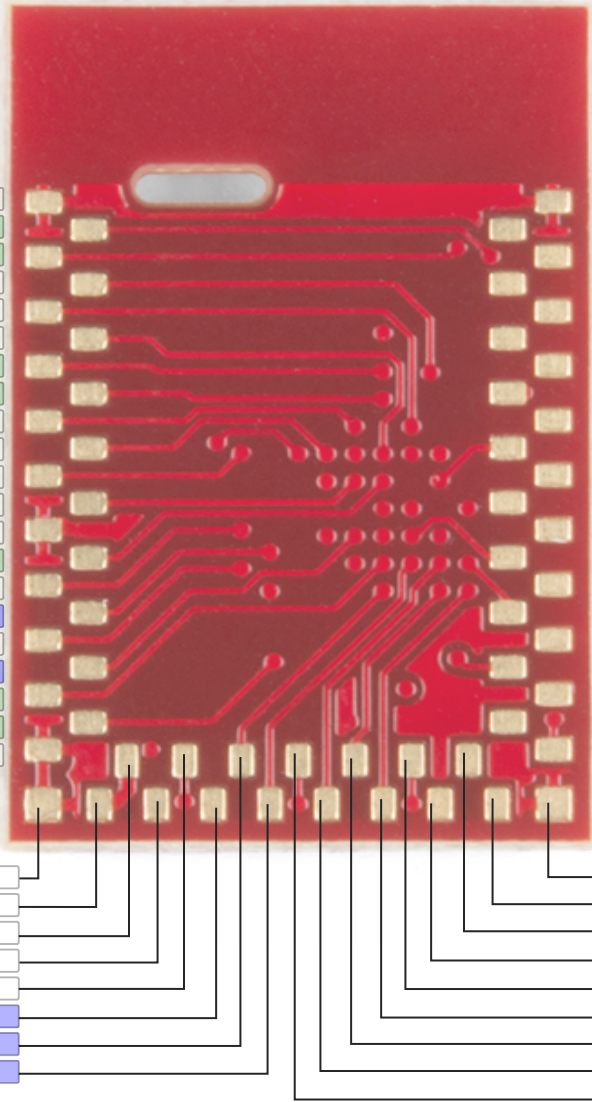


Artemis Module WRL-15376

Pad Name	Control
Power	Misc
GND	Misc2
	PWM - 15-bit
	ADC - 14-bit



GND	GND
TX0	MOSI4 44
	PDMCLK 37
	MOSI3 38
	PDMDATA 36
	3
TX1	SCL3/SCK3 42
RX1	SDA3/MISO3 43
	CLKOUT 0
Reset	RST
	1
	2
GND	GND
PDMDATA	45
	41
	31
	17
	16
	18
	19
GND	GND
GND	GND
3.3V	VDD
3.3V	VDD
32kHz RTC	XI
32kHz RTC	XO
PDMDATA	29
PDMDATA	11
PDMDATA	34



GND	GND
20	SWDCK
49	RX SDA5/MISO5
39	SCL4/SCK4
40	SDA4/MISO4
9	SDA1/MISO1
47	Boot MOSI5 32KHZ
10	MOSI1 PDMCLK
48	TX SCL5/SCK5
21	SWDIO
8	SCL1/SCK1
5	SCL0/SCK0
7	MOSIO CLKOUT
35	
4	
24	32KHZ
22	PDMCLK
23	
27	SCL2/SCK2
14	PDMCLK 32KHZ
28	MOSI2
GND	GND
6	SDA1/MISO0
32	
25	SDA2/MISO2
12	PDMCLK
26	
13	
15	PDMDATA
33	32KHZ

Bluetooth 5.0:
 TX: 3mA
 RX: 3mA
 4dBm TX (max)

Additional Functionality Not Shown: Secure Card, Flow Control, I2S, JTAG, Triggers

Power
 VDD: 1.8-3.6V
 6uA/MHz (operates less than 5mW at full operation)
 Bluetooth:
 TX: 3mA
 RX: 3mA
 4dBm TX (max)

Artemis Chip
 1MB Flash, 384k SRAM
 48MHz/96MHz ARM Cortex-M4F
 2 UARTS, 6 SPI/I2C Ports, 1 I2S
 ADC: 14 bit 0-2V
 PWM: 15-bit
 PDM interface
 Secure 'Smart Card' interface
 All pins are interrupt on change

Programming
 Boot TX/RX needed for serial bootloading
 Boot pin only required for factory bootloader updates

