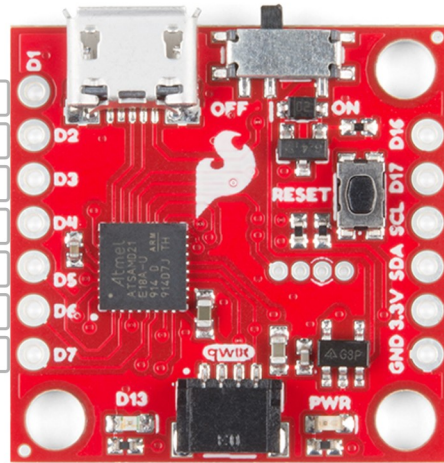


Qwiic Micro - SAMD21E (DEV-15423)

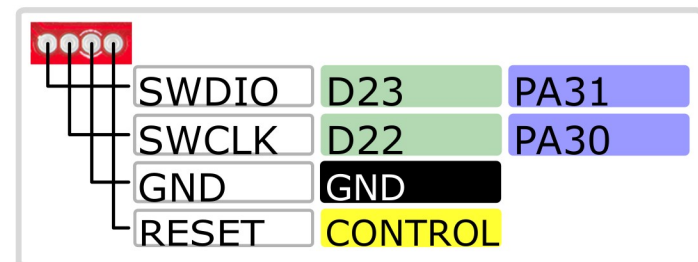
Pin name	Port
Power	Analog
Ground	Serial
Control	PWM
Arduino	Misc

Arduino Tips
 analogWriteResolution(10) - to update PWM (0-1023)
 analogReadResolution(12) - to update ADC (0-4095)

DAC	A0	PA02	D1	D1	RESET	CONTROL		
MOSI	A1	PA06	D2	D2	D16	D16	PA23	RX
MISO	A2	PA05	D3	D3	D17	D17	PA22	TX
SCK	A3	PA07	D4	D4	SCL	D8	PA09	SCL
CS		PA00	D5	D5	SDA	D0	PA08	SDA
		PA01	D6	D6	3.3V	3.3V		
AREFB	A5	PA04	D7	D7	GND	GND		



D13
D13
LED
PA10
A4



Power

VBatt: 3V-6V
 VUSB: 5V
 VCC: 3.3V @600mA
 Power Switch
 JST connector on backside

SAMD21E

ARM Cortex-M0+ @48MHz
 VCC: 1.62V-3.63V
 256KB Flash/32KB SRAM
 (plus 4Mb SPI Flash chip)
 4 SERCOM ports
 12-bit ADC
 10-bit DAC

LEDs/Misc Pins

Power LED: Red
 Stat LED: Blue
 Qwiic Connector (I2C)
 (SDA:D0, SCL:D8)
 W25Q32FV 4Mb flash
 (MOSI:D2, SCK:D4,
 MISO:D3, CS:D5)

