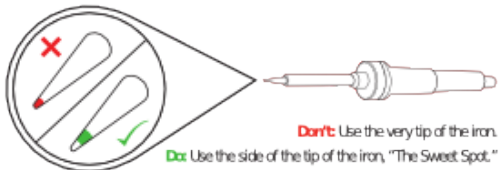
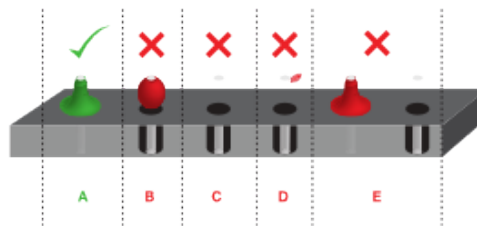


PTH Soldering SparkFun Electronics Summer Semester

! soldering tips



! soldering tips



Page 3

Quickstart - your first component

[steps 1 to 11]

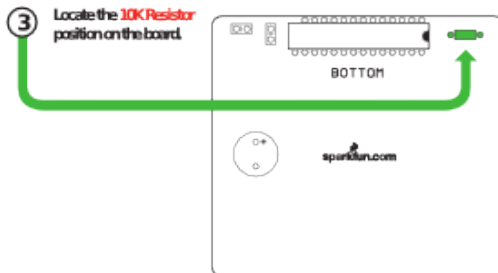
1 Locate the 10K Resistor.



2 Bend the legs downward.



3 Locate the 10K Resistor position on the board.



4 Insert the resistor into the PCB.



5 Push the resistor in so it is nearly flush with the board.



6 Slightly bend the legs outward to hold it in place.



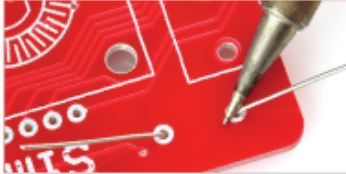
Page 5

PTH Soldering SparkFun Electronics Summer Semester

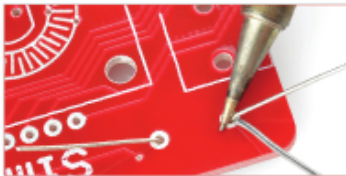
Quickstart - your first component

[steps 110114]

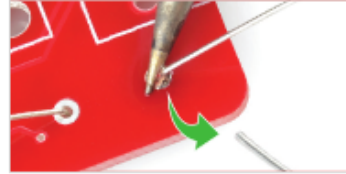
- ⑦ Flip the board over. Hold the soldering iron's "Sweet Spot" so it touches both the leg and the metal ring. Hold for 2 seconds.



- ⑧ Feed solder into the joint.



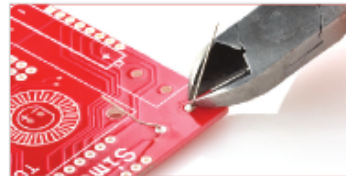
- ⑨ Pull solder away first.



- ⑩ Your solder joints should look like this - a tiny volcano.



- ⑪ Clip off any excess leg.



⚠ troubleshooting jumpers

Did you accidentally solder a jumper between two legs? Don't fret! Here is a simple process using solder wick to remove the excess solder.



- ① Locate a piece of solder wick.



- ② Place solder wick on top of solder.



- ③ Place iron on top of solder wick. Hold for 3-4 seconds.



- ④ Once the solder begins to flow into the wick, pull the wick and iron away at the same time.

